

# E450AJ

ELECTRIC BOOM

BOOM LIFT



## KEY SPECS

**Platform Height**  
45-ft / 13.72-m

**Horizontal Outreach**  
23-ft 9-in / 7.24-m

**Up and Over Reach**  
25-ft 3-in / 7.7-m

**Platform Capacity**  
500-lb / 227-kg

## KEY FEATURES

- Maximum maneuverability by moving over uneven surfaces with Automatic Traction Control.
- Achieve optimum productivity with longer duty cycles.
- Produces zero emissions, 100% environmentally friendly.
- Enhanced up and over access with jib.

## ACCESSORIES & OPTIONS

- 1/2-in Airline to Platform
- Ambient White Noise Alarm
- Batteries, 305 Amp-Hr AGM
- Bolt-on Fall Arrest System, 30 x 48-in, 30 x 60-in<sup>1,3,6</sup>
- Inverter - 2000W<sup>2</sup>
- Light Package<sup>5</sup>
- Platform Mesh to Mid or Top Rail<sup>3</sup>
  - Aluminum or Plastic
- Platforms
  - Drop Bar, 30 x 36-in, 30 x 48-in, 30 x 60-in, 30 x 72-in
  - Fall Arrest, Rear Entry<sup>4</sup>, 30 x 60-in, 36 x 72-in
  - Inward Self-Closing Swing Gate, 30 x 48-in, 30 x 60-in, 30 x 72-in
- Platform Padding<sup>3,7</sup>
  - 30 x 48-in, 30 x 60-in
  - Fall Arrest (Platform Required) 36 x 72-in
  - SkySense<sup>®</sup> Enhanced Detection System
  - Soft Touch, 30 x 60-in<sup>3</sup>
  - Storage Tray - Center
  - UL EE Rating

1. Requires Self-Closing Gate.  
 2. Not Available On UL EE Rating.  
 3. Not Compatible with Bolt-On Fall Arrest, Platform Mesh, Platform Rail Extensions, SkySense or Soft Touch (Excludes Option Noted).  
 4. Requires Additional Counterweight.  
 5. Includes Platform Lights, Head and Tail Lights.  
 6. Is Compatible with Platform Mesh.  
 7. Is Compatible with Mesh to Mid Rail.

Additional Accessories and Options Available Via JLG Aftermarket.

## STANDARD SPECIFICATIONS

### Performance

Platform Height	45-ft / 13.72-m
Horizontal Outreach	23-ft 9-in / 7.24-m
Up and Over Clearance	25-ft 3-in / 7.7-m
Swing	360 Degrees Non-Continuous
Platform Capacity	500-lb / 227-kg
Platform Rotator	180 Degrees Hydraulic
Jib Range of Articulation (Vertical)	141 Degrees (+86, -55)
Weight*	14,400-lb / 6,532-kg
Ground Bearing Pressure	110 psi / 7.6 kg/cm <sup>2</sup>
Max Drive Speed	4.5 mph / 7.2 km/h
Gradeability	30%
Turning Radius Inside (2WS/4WS)	2-ft / .61-m
Turning Radius Outside (2WS/4WS)	10-ft 4-in / 3.15-m

### Power Source

Electrical System	48V DC
Batteries	8 x 6V, 375 amp-hr
Drive Motors	Dual Electric Traction

### Tires

Standard	240/55 x 17.5 Foam-filled
Optional	26 x 7 x 20 Non-marking In240/55D17.5 Foam-Filled Non-marking

### Hydraulic System

Capacity	4 gal / 15.14 L
Motor/Pump	Permanent Magnet Motor/Gear Pump

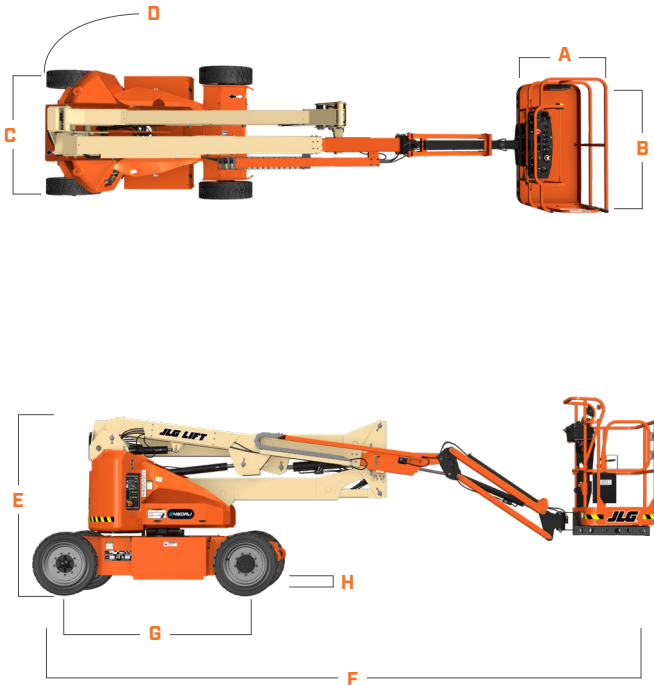
## STANDARD FEATURES

- 110V-AC Receptacle in the Platform
- 12V DC Auxilliary Power
- 180 Degree Hydraulic Platform Rotator
- 3 Degree Tilt Cut-out
- All Motion Alarm
- Automatic Traction Control (ATC)
- Battery Condition Indicator
- Brushless AC Motors
- ClearSky Smart Fleet™ Hardware (CS550)\*\*
- Horn
- Hourometer
- LED Motion/Amber Beacon (CS550)\*\*
- Lifting/Tie Down Lugs
- Load Sensing System
- Platform Console Machine Status Light Panel\*\*\*
- SkyGuard SkyLine™
- Tilt Light and Alarm

\*Certain options or country standards increase weight.  
 \*\*Standard beacon and ClearSky Smart Fleet hardware availability varies by model throughout 2023.  
 \*\*\*Provides indicator lights at platform control console for system distress, low fuel, degree tilt light and foot switch status.

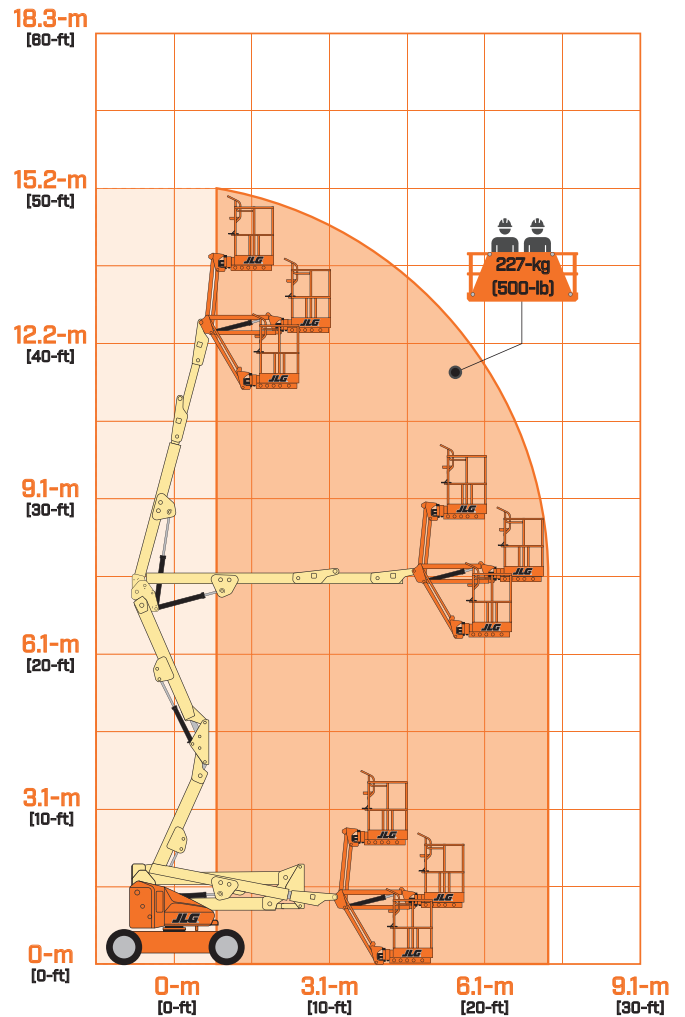
## DIMENSIONS

All dimensions are approximate



- |                     |                     |
|---------------------|---------------------|
| A. Platform Width   | 30-in / 76-cm       |
| B. Platform Length  | 60-in / 1.52-m      |
| C. Machine Width    | 5-ft 9-in / 1.75-m  |
| D. Tailswing        | 0-in / 0-cm         |
| E. Machine Height   | 6-ft 7-in / 2.01-m  |
| F. Machine Length   | 21-ft 2-in / 6.45-m |
| G. Wheelbase        | 6-ft 7-in / 2.01-m  |
| H. Ground Clearance | 8-in / 20-cm        |

## REACH DIAGRAM



We provide coverage for one (1) full year, and cover all specified major structural components for five (5) years. Due to continuous product improvements, we reserve the right to make specification and/or equipment changes without prior notification. This machine meets or exceeds applicable ANSI and CSA requirements based on machine configuration as originally manufactured for intended applications. Please reference the serial number plate on the machine for additional information.



JLG INDUSTRIES, INC.  
Toll-free US 877-JLG-LIFT  
JLG.com

An Oshkosh Corporation Company